



SHELL - N - TUBE



DOLPHIN

Super Insulated Cryogenic Storage Tanks


Latest addition to Shell - N - Tube product range to meet the growing need of Gas Industry, designed specifically for bulk tank users. Super insulated vacuum jacketed storage tanks with Dataonline Remote Telemetry unit and digital display of tank levels as standard which allows you to plan your deliveries without depending on customer feedback for liquid levels.

Tank Features


- Rugged construction
- High performance super insulation.
- Unmatched vacuum reliability
- Liquid and gas withdrawal
- Skid mounted vaporizer
- Smaller footprint.

Telemetry Features

- Remote monitoring of liquid level
- Digital display in any measuring units
- Gives SMS and web based alerts at predetermined critical levels
- Provides 12 weeks consumption data & forecast
- Calculates and informs best time to deliver
- Gives asset information customer/product/location wise
- Location of asset can be sighted on Google Map

 **Office** : 3 Gulmohar Orchids,
29/37 Sahney Sujan Park,
Lullanagar, Pune - 411040,
Maharashtra, India

 +91 20 26834425

 **Factory** : W5 & B52 MIDC Wai
Pune Mahabaleshwar Road,
Wai - 412083,
Maharashtra, India

 +91 2167 265004

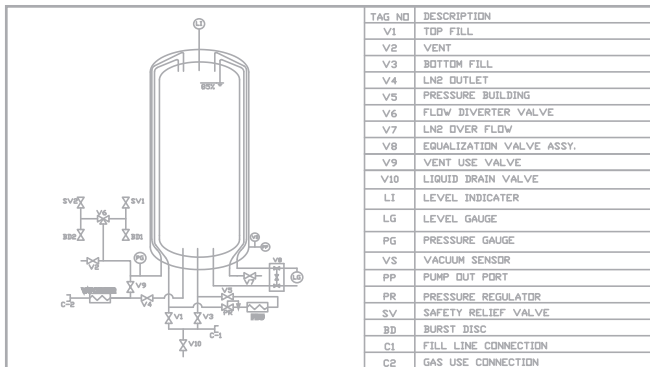
 www.shell-n-tube.com

 sales@shell-n-tube.com

SHELL - N - TUBE

Specifications

Model	SVS-500L-24	SVS-970-18	SVS-3700-18	SVS-6000-18	SVS-15000-15
Configuration	Vertical	Vertical	Vertical	Vertical	Vertical
Gross Volume (Litres)	680	974	3700	6000	15063
Net Volume (Litres)	550	838	3263	5564	14194
Nominal Net Evaporation Rate (%)	2.50%	2%	0.45%	0.30%	0.23%
Material of construction					
Inner Vessel	SS 304	SS 304	SS 304	SS 304	SS 304
Outer Vessel	SS 304	IS 2062 Gr. B	IS 2062 Gr. B	IS 2062 Gr. B	IS 2062 Gr. B
Design Code	ASME Section VIII Div 1	ASME Section VIII Div 1	ASME Section VIII Div 1	ASME Section VIII Div 1	ASME Section VIII Div 1
Maximum Allowable Working Pressure (Kg/Cm2 (g))	24	18	18	18	15
Nominal Operating Temperature (Deg. C)	-196 to 65	-196 to 65	-196 to 65	-196 to 65	-196 to 65
Cleaning Duty	Oxygen Service	Oxygen Service	Oxygen Service	Oxygen Service	Oxygen Service
Insulation	Multilayer Vacuum	Multilayer Vacuum	Multilayer Vacuum	Multilayer Vacuum	Multilayer Vacuum
Inspection	TPI	TPI	TPI	TPI	TPI
Empty Weight (Kg)	727	1095	2488	4315	10382
Full Weight (Approx)					
LIN (Kg)	1284	1892	5675	9223	21841
LOX (Kg)	1503	2207	6870	11161	26577
LAR (Kg)	1675	2453	7806	12679	30168
Outside Diameter (mm)	1028	1020	1565	1565	2250
Overall Height (mm)	1855	3266	4002	5838	6820



Feature Comparison

FEATURE COMPARISON	DataOnline Telemetry	DP Gauge
500 psi pressure rating	Y	Y
Oxygen cleaned	Y	Y
3/4" FPT back-mount	Y	Y
Digital level readout	Y	
Digital pressure readout	Y	
No calibration charts required	Y	
One gauge for upto 20,000 gallons	Y	
One gauge for LOX/LIN/LAR/N ₂ O/CO ₂	Y	
(8) level readouts options	Y	
(3) pressure readout options	Y	
(3) adjustable pressure alerts	Y	
User programmable	Y	
Telemetry ready	Y	
Digital & 4-20 mA output signals	Y	
NEMA 4 water and weather tight	Y	
Equalization valve included	Y	
Integrates with other alarm systems	Y	

